



**CubeMatch**  
Powering Change

# Funds Industry Services

**CubeMatch 2026**

## WHO WE ARE

---

Founded in 2002, CubeMatch is a **global change and transformation consultancy**, specialising in **Financial Services** and selected as the **chosen partner** for some of the largest and most demanding transformation projects within the Financial Services sector.

CubeMatch is an international brand **powering change** across **eight offices: Dublin, London, Utrecht, Frankfurt, Basel, Stuttgart, Singapore and Chennai**. At CubeMatch, we combine world-class expertise in financial services with rich skills across change and transformation to deliver agile, effective change that moves your business forward.

We apply a **multiplier effect**, helping clients to be more effective today while creating value for tomorrow.

Over the years, we have successfully built a global firm that is uniquely equipped to deliver pragmatic and business-focused results. We have over **400 staff and multi-million euro revenue**. And through our **strategic partnerships** we apply innovation to help organisations operate, compete and deliver at scale. Blending our powerful change capabilities with next generation technology, we deliver **innovation and business agility** to help businesses thrive.

**The finance world is constantly changing, make sure your business leads the change.**


With decades of hands-on experience, we're a team of global change and transformation experts who know financial services inside out. We are committed to making change happen.

**Everything we do revolves around Powering Change for financial services companies.**

We provide trusted and flexible expertise that helps businesses like yours embrace the future, navigate challenges, and reach new levels of growth and success. You can count on us to be a **safe pair of hands**, ready to take action and guide your business forward.

**Every change starts with a conversation.**

Let's chat about how CubeMatch can drive your transformation.

**Find out more** 

# THE FUNDS INDUSTRY IS AT AN INFLECTION POINT

---

The Funds Industry is currently at a pivotal juncture, driven by a convergence of regulatory changes, technological advancements, and increasing downward pressure on fees. Regulatory updates, such as those related to the Alternative Investment Fund Managers Directive (AIFMD), Environmental, Social, and Governance (ESG) revisions, and the Digital Operational Resilience Act (DORA), are bringing new, onerous responsibilities to bear while reshaping the operational landscape. These increased compliance and reporting requirements, along with rising operational cost pressures and a market shift towards more intricate structures and instruments.

Moreover, the industry faces intense competition for market share from NeoBanks and FinTechs, which are exploiting emerging technologies, agile methodologies, and innovative products to compete on product and price. The European Securities and Markets Authority (ESMA) is also intensifying cost supervision, adding another layer of complexity to the environment and underscoring the urgent case for transformation.

The shift to T+1 settlement, coupled with the challenges posed by legacy platforms and corresponding operating model complexities, serve to highlight the need for to modernise aging and siloed systems, improve data governance and retrieval methods, and the redesign of processes to copper-fasten the management of risk and exploit the opportunities presented by emerging technologies, and develop to exploit new market prospects as they arise.

The introduction of new technologies, such as artificial intelligence can offer a competitive edge. Just as the banking sector is experiencing a transformative shift with the integration of generative AI, adoption of open banking regulations, and evolving customer expectations, the Irish funds industry must also adapt to this new era. This moment represents not just incremental change, but a fundamental rethinking of operations and client engagement, paving the way for enhanced value creation and sustained growth.

## OUR CAPABILITIES

---



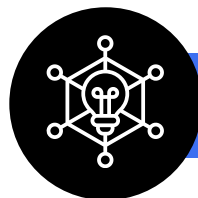
### Digital Transformation

At CubeMatch everything we do revolves around managing and enabling change for financial services companies from initial planning through design, development, and testing, to operational deployment and support. With over 20 years of experience in the industry, we specialise in delivering large-scale change programs and remediation initiatives through the provision of trusted and flexible expertise to help businesses embrace the future, navigate challenges, and reach new levels of growth and success.



### AI Services

We support funds industry organisations in preparing for, devising, adopting, and operationalising artificial intelligence solutions using a structured, end-to-end approach supported by our experienced team. Services focus on strengthening the foundations for successful AI deployment, including data governance, process optimisation, and operating model design, ensuring solutions are scalable, explainable, and aligned with regulatory expectations, and deliver tangible, reliable business value. We work with clients to identify high-value use cases, embed AI within robust control frameworks, and integrate capabilities seamlessly across legacy systems and third-party providers. By combining strategic advisory with hands-on implementation, we enable firms to move beyond experimentation and deliver AI-driven outcomes that enhance efficiency, oversight, and decision-making across their business.



### Data Governance Support

Our AI-powered Data Governance Portal designed to transform data governance from a compliance requirement into a strategic asset. The portal focuses on providing clarity from data sprawl, enabling AI-ready data foundations, and fostering data-driven growth. This is achieved through real-time data quality tracking, AI-powered risk assessment, automated taxonomy, executive dashboards and proactive data quality alerts.

**The Impact: 60% faster processing, 90% better audit readiness, zero penalties.**



## Regulatory Compliance

CubeMatch provide expert-led regulatory and compliance services, combining deep industry knowledge with a strong partner RegTech network to deliver practical, end-to-end solutions. Our offerings span regulatory gap analysis and implementation and transaction & regulatory reporting. By integrating technology-enabled reporting solutions with comprehensive risk and compliance frameworks, CubeMatch helps organisations remain secure, compliant, and future ready in an increasingly complex regulatory landscape.



## KYC Operations

CubeMatch bring strong capabilities in AML operations, helping our clients to manage risk and meet evolving regulatory expectations. We provide extensive Know Your Customer (KYC) and Anti-Money Laundering (AML) services and have a track record in supporting Tier 1 banking and funds industry clients with high-risk customer investigations and large-scale KYC remediations. We conduct due diligence and ongoing monitoring to ensure compliant and secure operations.

### OUR EXPERTS



**Daire Lawlor**  
Senior Funds Industry Advisor  
[daire.lawlor@interwoven.ie](mailto:daire.lawlor@interwoven.ie)



**Leslie Duckett**  
CubeMatch Chief Revenue Officer  
[leslie.duckett@cubematch.com](mailto:leslie.duckett@cubematch.com)



**Keith O'Brien**  
LPA Chief Commercial Officer  
[keith.obrien@L-P-A.com](mailto:keith.obrien@L-P-A.com)



# CubeMatch

Powering Change